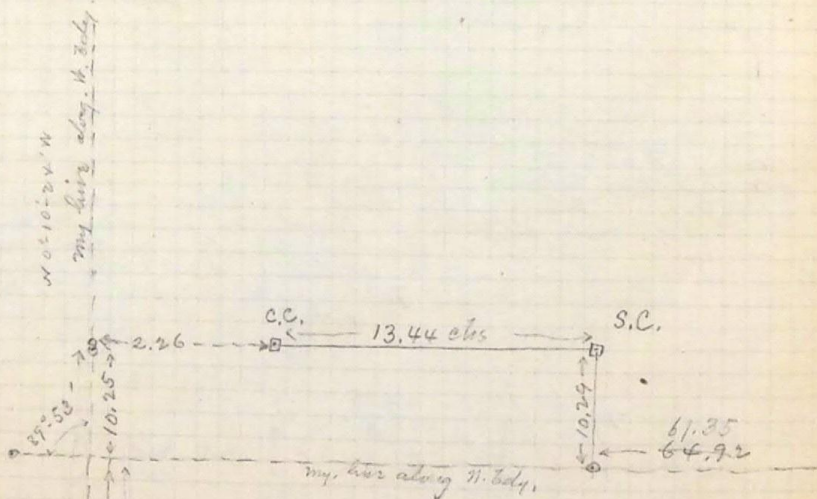


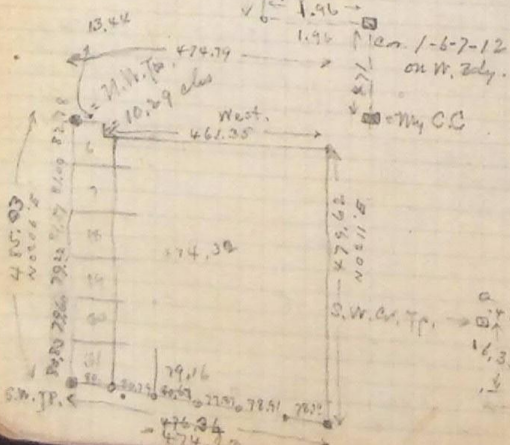
Thursday Aug. 13-1895

72.94 Intersect the line which I previously ran
 N. along N. bdy. Tp. 4. at 286.21 ch by 6.5 mile N.W. angle of
 Subdivision = 89.53' (2.20 chs E D) or 477.80 chs from
 N.E. Cor. Tp. 4. at 83.19 ch find Tp. Cor. 2.26
 ch. S.

Therefore from the bearing of N. bdy from S.W. Cor. of Tp. 4
 To, Cor. Sec. 13-19-194 & 4, = $S\ 0^{\circ} 11' E$.



1/4 Cor.
 50' = 77.0 chs
 1/4 cor. set by me



meas 485.03
 - 10.29
 474.74
 + lat of S. bdy 6.01
 W. bdy → 480.75
 E. bdy 479.6 chs
 1.13 chs
 480.75 - 479.6 = 1.13 chs

N. bdy too long by 1.13 chs

489.11 W.

W. 476.36 chs